

PT14BM

HIGH PRESSURE #2500 BIMETTALIC STEAM TRAP



DESCRIPTION:

PT14BM high pressure thermostatic steam trap is made of forged body with bimetallic controller assembly, inbuilt strainer and stainless-steel internals. Best suited for high pressure steam trace lines, header drip legs, heating coils and various process and heating applications.

FEATURES:

- Excellent resistance to water hammer.
- Tight Shut-off, No Steam Loss.
- Easy Maintenance – No Need of removing trap from the piping system to clean/ replace internals.
- Long lasting modulating discharge. Excellent air venting capacity.

SIZES: DN15,20,25

CONNECTIONS: Socket Weld/ Butt Weld/Flanged

*End Connection Flanges of ASTM A182 Gr. F304 forged carbon steel are welded on.

LIMITING CONDITIONS:

Note: Non IBR/ IBR approved

PMA: Max. Allowable Pressure	430.9 bar@38°C
TMA: Max. Allowable Temperature	565°C @ 104 bar
PMO: Max. Operating Pressure	140 bar @ 545°C
TMO: Max. Operating Temperature	545°C @ 140 bar
Cold Hydro test pressure	646.4 bar

INSTALLATION:

Trap should be installed in a horizontal Plane with cover on top, and below drain point. Full port isolation valves should be installed 1 meter minimum upstream & downstream of the trap.

IMPORTANT:

The trap should be installed as close as possible to the equipment to be drained.

For new Pipelines, ensure that the lines are properly flushed, prior to the fitting of the trap to avoid strainer choke up

To prevent water logging, it is required that the line be drained by using the bypass, at start-up.

AVAILABLE SPARES:

Bimetallic Controller Assembly, Insert, gaskets.

HOW TO ORDER: PT14BM IBR DN15 SW.

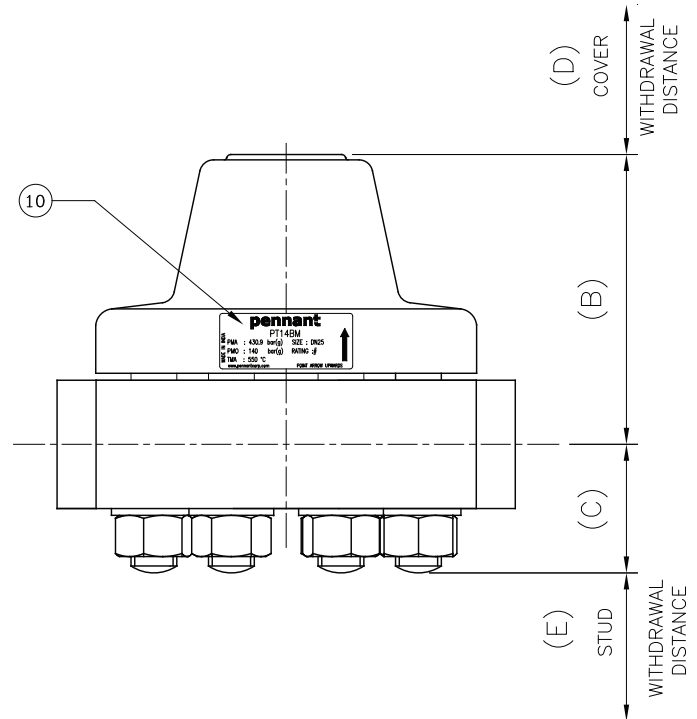
ORDERING INFORMATION:

1. Inlet pressure in bar(g).
2. Back pressure in bar(g).
3. Operating temperature in °C.
4. Size & End Connection
5. Condensate Load in Kg/hr.
6. IBR/NIBR.

Local regulations may restrict the use of this product below the conditions quoted. Limiting conditions refer to standard connections only. In the interest of development and improvement of the product, we reserve the right to change the specifications without prior notice.

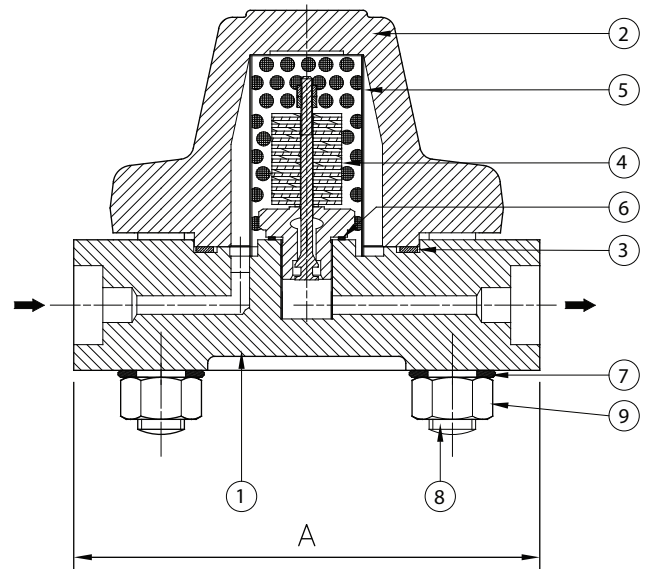
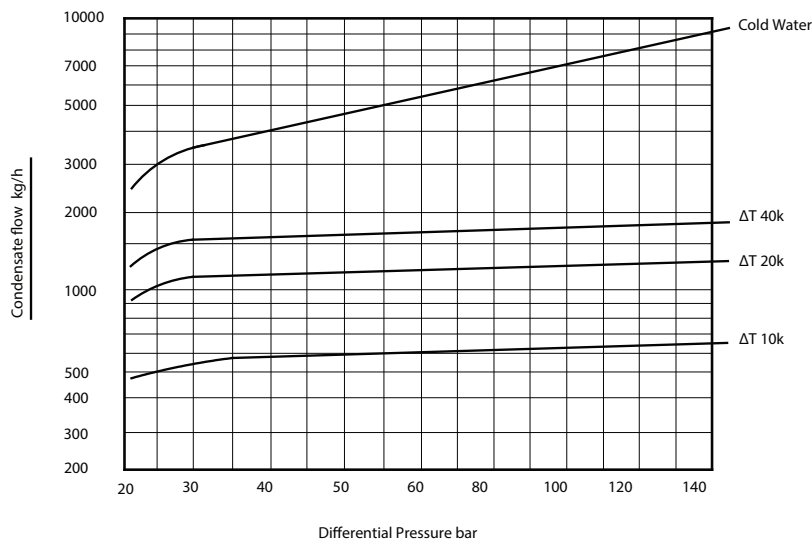
BILL OF MATERIAL:

NO	PART NAME	MATERIAL	QTY
1	BODY	ASTM A182 GR. F22 CL3	1
2	COVER	ASTM A182 GR. F22 CL3	1
3	COVER GASKET	SPIRAL WOUND GASKET WITH GRAPHITE AISI304	1
4	CONTROLLER ASSLY	BIMETAL	1
5	STRAINER SCREEN	AISI 304 40 Mesh, ø6 Perforation	1
6	CONTROLLER ASSLY GASKET	AISI 304	1
7	WASHER	45C8	8
8	STUDS	ASTM A193 GR. B16	8
9	NUTS	ASTM A194 GR. B7	8
10	LABEL	AISI 304	1



DIMENSIONS: Nominal in mm

MODEL	SIZE	A	B	C	D	E	WEIGHT
PT14BM	DN15-25	200	126	56	100	100	15.4 Kg



Local regulations may restrict the use of this product below the conditions quoted. Limiting conditions refer to standard connections only. In the interest of development and improvement of the product, we reserve the right to change the specifications without prior notice.