

3/2-Way Midget Type, Direct Acting, Solenoid Valves.

DATA SHEET
9350B
9352B

Normally Closed, Energised To Open,
Normally Open, Energised To Close.

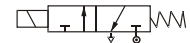
SPECIFICATIONS

Sizes	: 6mm (1/4").
End Connections	: Standard-G-ISO-228 (BSP-F), Optional - NPT.
Construction-Body	: Standard-Brass forged IS 6912, Optional-SS ASTM A351 Gr. CF8, CF8M.
-Seat	: Standard-Nitrile (Buna 'N'), Optional-Viton, Neoprene.
Differential Pressure	: 0 to 10 bar.
Temperature of fluid	: -5°C to 80 °C.
Coil Voltage	: Standard-230-volts, 50Hz. A C. Optional - 24,110, 240 V DC & AC 50Hz or 60Hz.
Coil Insulation and Temperature.	: Ambient upto 42°C. Class 'H' insulated upto 155°C.
Coil Rating	: Continuously rated.
Enclosure	: Standard-General purpose SQ. moulded coil upto IP-20, Optional-Weatherproof SQ. moulded coil upto IP-67, Flameproof coil upto FLP IIC.
Fluids	: Air, water, gas, light oil, mild corrosive fluids etc.
Optional Features	: Manual override, mounting bracket.



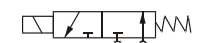
Sales Point	: Simple, reliable economical valve for multi-million operations.
Application	: For operating Diaphragm valves, Single acting cylinders, clutches, automation of any type, compressor loading and unloading, lubrication devices, textile printing and processing machinery.
Note	: USE OF FILTER IN THE INLET SIDE IS HIGHLY RECOMMENDED .

SPECIFICATION TABLE 3/2 WAY NORMALLY CLOSED



Catalogue Number	Pipe Size	Orifice Size	Flow Factor Kv	Minimum Pressure	Maximum Operating Pressure (bar)						BTP	Material		Constr. Ref.	VA Rating	Watt Rating	Coil Type	Housing
					AC			DC				Body	Seat					
					Air/Gas	Water	Light Oil	Air/Gas	Water	Light Oil								
9350B015	1/4	1.5	0.07	0	13	12	10	15	14	12	40	BR	BN	15.1	18	12	M45.1	SQ
9350B020	1/4	2.0	0.08	0	6.5	6	5	7	6.5	6	40	BR	BN	15.1	18	12	M45.1	SQ
9350B025	1/4	2.5	0.11	0	4	3.5	3	4	3.5	3	40	BR	BN	15.1	18	12	M45.1	SQ
9350B030	1/4	3.0	0.13	0	2.5	2	2	2.5	2	2	40	BR	BN	15.1	18	12	M45.1	SQ
9350B026	1/4	2.5	0.11	0	15	10	10	18	15	12	40	BR	BN	168	36	22	M50	SQ
9350B031	1/4	3.0	0.15	0	10	9	8	13	13	10	40	BR	BN	168	36	22	M50	SQ
9350B041	1/4	4.0	0.38	0	5	4.5	4	10	10	8	40	BR	BN	168	36	22	M50	SQ

3/2 WAY NORMALLY OPEN



9352B010	1/4	1.0	0.04	0	10	9	8	10	9.5	8.5	40	BR	BN	74.1	18	12	M45.1	SQ
9352B015	1/4	1.5	0.07	0	7	6	6	7	6.5	6	40	BR	BN	74.1	18	12	M45.1	SQ
9352B020	1/4	2.0	0.08	0	4	3.5	3	4	3.5	3	40	BR	BN	74.1	18	12	M45.1	SQ
9352B025	1/4	2.5	0.11	0	2.8	2.5	2	2.8	2.5	2	40	BR	BN	74.1	18	12	M45.1	SQ

ELECTRICAL REFERENCE

Coil Type	Power Consumption & Watt Rating			Class of Insulation	Protection
	AC		DC		
	VA Inrush	VA Holding	Watts		
M 45.1 SQ	25	18	12	H	GP/WP IP-67
M 50 SQ	50	36	22	H	GP/WP IP-67
M 45.1 RD	25	18	12	H	GP/WP IP-67
M 50 RD	50	36	22	H	GP/WP IP-67
M 45.1 FLP IIC	25	18	12	H	IS/IEC 60079-1:2007, Group IIC.
M 50 FLP IIC	50	36	22	H	IS 12063-1987 IP-66 (IEC 60529:1989).

DIMENSIONS IN (MM)

<p>CONSTRUCTION REF. NO.: 15.1</p> <p>Valve fitted with M45 SQ. coil</p> <p>BRASS BODY</p>			<p>CONSTRUCTION REF. NO.: 15.2</p> <p>Valve fitted with M45 SQ. coil</p> <p>SS BODY</p>			<p>Valve fitted with M45 / M50 RD GP coil - General purpose enclosure as per IP-20</p>									
<p>CONSTRUCTION REF. NO.: 74.1</p> <p>Valve fitted with M45 SQ. coil</p> <p>BRASS BODY</p>			<p>CONSTRUCTION REF. NO.: 74.2</p> <p>Valve fitted with M45 SQ. coil</p> <p>SS BODY</p>			<p>Valve fitted with M45 / M50 RD WP coil - Waterproof metallic enclosure as per IS12063-1987 IP-67</p>									
<p>CONSTRUCTION REF. NO.: 168</p> <p>Valve fitted with M50 SQ. coil</p> <p>BRASS BODY</p>			<p>CONSTRUCTION REF. NO.: 169</p> <p>Valve fitted with M50 SQ. coil</p> <p>SS BODY</p>			<p>Valve fitted with M45 / M50 FLP IIC coil - Flameproof metallic enclosure as per IS/IEC 60079-1:2007.</p>									
Catalogue Number	Pipe Size Inch	Constr. Ref.	A	B	C	Weight (Approx.) Kgs. ⚡	E (RADIALLY)			F			G (APPROX.)		
							RD	GP	RD WP	FLP	RD	GP	RD WP	FLP	RD
9350B015-030	1/4	15.1	39.5	10.5	85	0.518	60	96	96	48	62	80	72	80	150
9350B015-030	1/4	15.2	51	12.6	78	0.503	60	96	96	48	62	80	65	73	143
9352B010-025	1/4	74.1	39.5	10.5	100	0.533	60	96	96	48	62	80	87	112	165
9352B010-025	1/4	74.2	51	12.6	93	0.533	60	96	96	48	62	80	80	105	158
9350B026-041	1/4	168	39.5	10.5	98	0.620	66	96	96	57	68	80	89	94	159
9350B026-041	1/4	169	51	12.6	91	0.605	66	96	96	57	68	80	82	87	151

⚡ Wt with GP enclosure only, ask AVCON for other weights.

Note:

Technical specifications, details & dimensions are subject to change without prior notice. Dimensions in the table are approximate subject to final confirmation by AVCON.