

# 2/2-Way Pilot Operated, Piston Type, High Pressure Solenoid Valves.

DATA SHEET  
9123 M

Normally Closed, Energised To Open.  
Antiwater Hammer Design.

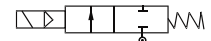
## SPECIFICATIONS

Sizes	: 15mm (1/2") to 50mm (2").
End Connections	: Standard-G-ISO-228 (BSP-F), Optional-NPT.
Construction-Body	: SS ASTM A351 Gr.CF8.
-Piston	: SS ASTM A351 Gr. CF8M.
-Seat	: Standard-PTFE.
Differential Pressure	: 4 to 110 bar.
Temperature of Fluid	: -5°C to 120°C.
Coil Voltage	: Standard-230-volts, 50Hz. A C. Optional - 24,110, 240 V DC & AC 50Hz or 60Hz.
Coil Insulation and Temperature	: Ambient upto 42°C. Class 'H' insulated upto155°C.
Coil Rating	: Continuously rated.
Enclosure	: Standard-General purpose SQ. moulded coil upto IP-20, Optional-Weatherproof SQ. moulded coil upto IP-67, Flameproof coil uptoFLP IIC.
Fluids	: Air, water, light hydraulic oil,mild corrosive medium, etc.



Sales Point	: Highly reliable, compact, maintenance free valve, suitable for thousands of operations.
Application	: Water treatment system, combustion equipment etc. Not suitable for Steam duty application. Not available in Normally Open design.
Note	: USE OF FILTER IN THE INLET SIDE IS HIGHLY RECOMMENDED.

## SPECIFICATION TABLE 2/2 WAY NORMALLY CLOSED



Catalogue Number	Pipe Size	Orifice Size	Flow Factor Kv	Minimum Pressure	Maximum Operating Pressure (bar)						BTP	Material		Constr. Ref.	VA Rating	Watt Rating	Coil	Housing
					AC			DC				Body	Seat					
					Air/Gas	Water	Light Oil	Air/Gas	Water	Light Oil					bar	AC		
9123M154	1/2	16	3.6	4	45	75	60	45	110	60	120	CF8	PTFE	155	36	22	M50	SQ
9123M204	3/4	20	5.3	4	45	75	60	45	110	60	120	CF8	PTFE	155	36	22	M50	SQ
9123M254	1	25	8.6	4	45	75	60	45	110	60	120	CF8	PTFE	155	36	22	M50	SQ
9123M354	1 1/2	34	17.3	4	45	75	60	45	110	60	120	CF8	PTFE	156	36	22	M50	SQ
9123M504	2	45	30.5	4	45	75	60	45	110	60	120	CF8	PTFE	156	36	22	M50	SQ

## ELECTRICAL REFERENCE

Coil Type	Power Consumption & Watt Rating			Class of Insulation	Protection
	AC		DC		
	VA Inrush	VA Holding	Watts		
M 50 SQ	50	36	22	H	GP/WP IP-67
M 50 RD	50	36	22	H	GP/WP IP-67
M 50 FLP IIC	50	36	22	H	IS/IEC 60079-1:2007, Group IIC. IS 12063-1987 IP-66 (IEC 60529:1989).

## DIMENSIONS IN (MM)

Catalogue Number	Pipe Size Inch	Constr. Ref.	A	B	C	D	Weight (Approx.)	Valve fitted with M50 RD GP coil - General purpose enclosure as per IP-20  Valve fitted with M50 RD WP coil - Waterproof metallic enclosure as per IS 12063-1987 IP-67.  Valve fitted with M50 FLP IIC coil - Flameproof metallic enclosure as per IS/IEC-60079-1:2007.
							Kgs. ♦	
9123M154	1/2	155	65	38	122	75	1.825	
9123M204	3/4	155	80	45	126	94	2.575	
9123M254	1	155	95	53	134	102	3.435	
9123M354	1 1/2	156	118	56	138	120	4.171	
9123M504	2	156	137	73	158	136	5.425	

CONSTRUCTION REF. NO. : 155											
CONSTRUCTION REF. NO.: 156											
Catalogue Number	Pipe Size Inch	Constr. Ref.	E (RADIALLY)			F			G (APPROX.)		
			RD GP	RD WP	FLP	RD GP	RD WP	FLP	RD GP	RD WP	FLP
9123M154	1/2	155	66	96	96	57	68	80	113	118	183
9123M204	3/4	155	66	96	96	57	68	80	117	122	187
9123M254	1	155	66	96	96	57	68	80	125	130	195
9123M354	1 1/2	156	66	96	96	57	68	80	129	134	199
9123M504	2	156	66	96	96	57	68	80	149	154	219

♦ Weight with SQ enclosure only, ask AVCON for other weights.

### Note:

Technical specifications, details & dimensions are subject to change without prior notice. Dimensions in the table are approximate subject to final confirmation by AVCON.