

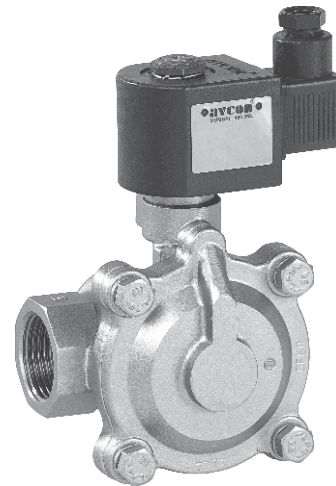
2/2-Way Pilot Operated, Diaphragm Type, Solenoid Valves.

DATA SHEET
9100F
9120F

Normally Closed, Energised To Open,
Normally Open, Energised To Close.

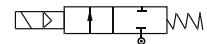
SPECIFICATIONS

Sizes	: 10mm (3/8") to 75mm (3").
End Connections	: Standard-G-ISO-228 (BSP-F), Optional - NPT.
Construction-Body	: Upto 20mm (3/4") Brass forged IS 6912 and above in SS ASTM A351 Gr. CF8. Optional-SS ASTM A351Gr. CF8M.
Diaphragm Seat	: Standard-Nitrile (Buna 'N'), Optional-Neoprene, Viton and others.
Differential Pressure	: 0.5 to 10 bar.
Temperature of Fluid	: -5°C to 120°C.
Coil Voltage	: Standard-230-volts, 50Hz. A C. Optional - 24,110, 240 V DC & AC 50Hz or 60Hz.
Coil Insulation and Temperature.	: Ambient upto 42°C. Class 'H' insulated upto155°C.
Coil Rating	: Continuously rated.
Enclosure	: Standard-General purpose SQ. moulded coil upto IP-20, Optional-Weatherproof SQ. moulded coil upto IP-67, Flameproof coil upto FLP IIC.
Fluids	: Air, water, gas, light oil, heavy oil, mild corrosive fluid, etc.



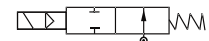
Optional Features	: Manual override, mounting bracket.
Sales Point	: Most reliable, maintenance free, on-off valve in our range .
Application	: Chemical, textile, cement machinery, combustion equipments, air dryer, cleaning equipment and others. Not suitable for steam duty.
Note	: USE OF FILTER IN THE INLET SIDE IS HIGHLY RECOMMENDED.

SPECIFICATION TABLE 2/2 WAY NORMALLY CLOSED



Catalogue Number	Pipe Size	Orifice Size	Flow Factor Kv	Minimum Pressure	Maximum Operating Pressure (bar)						BTP	Material		Constr. Ref.	VA Rating	Watt Rating	Coil	Housing
					AC			DC				Body	Seat					
					Air/Gas	Water	Light Oil	Air/Gas	Water	Light Oil								
9100F104	3/8	16	2.6	0.5	12	12	10	12	12	10	40	BR	BN	83.1	18	12	M45.1	SQ
9100F154	1/2	16	3.4	0.5	12	12	10	12	12	10	40	BR	BN	83.1	18	12	M45.1	SQ
9100F204	3/4	20	5.2	0.5	12	12	10	12	12	10	40	BR	BN	83.1	18	12	M45.1	SQ
9100F254	1	25	8.6	0.5	12	12	10	12	12	10	40	CF8	BN	83.1	18	12	M45.1	SQ
9100F304	1 1/4	28	14.0	0.5	12	12	10	12	12	10	40	CF8	BN	83.1	18	12	M45.1	SQ
9100F354	1 1/2	34	17.3	0.5	12	12	10	12	12	10	40	CF8	BN	83.1	18	12	M45.1	SQ
9100F504	2	45	30.5	0.5	12	12	10	12	12	10	40	CF8	BN	153	18	12	M45.1	SQ
9100F654	2 1/2	60	45	0.7	10	10	8	10	10	8	40	CF8	BN	153	36	22	M50	SQ
9100F754	3	72	66	0.7	10	10	8	10	10	8	40	CF8	BN	153	36	22	M50	SQ

2/2 WAY NORMALLY OPEN (NEW MAGNETIC CONSTRUCTION TYPE)



9120F104	3/8	16	2.6	0.5	10	8	7	10	8	7	40	BR	BN	83.1	18	12	M45.1	SQ
9120F154	1/2	16	3.4	0.5	10	8	7	10	8	7	40	BR	BN	83.1	18	12	M45.1	SQ
9120F204	3/4	20	5.2	0.5	10	8	7	10	8	7	40	BR	BN	83.1	18	12	M45.1	SQ
9120F254	1	25	8.6	0.5	10	8	7	10	8	7	40	CF8	BN	83.1	18	12	M45.1	SQ
9120F304	1 1/4	28	14	0.5	10	8	7	10	8	7	40	CF8	BN	83.1	18	12	M45.1	SQ
9120F354	1 1/2	34	17.3	0.7	10	8	7	10	8	7	40	CF8	BN	83.1	18	12	M45.1	SQ
9120F504	2	45	30.5	0.7	10	8	7	10	8	7	40	CF8	BN	153	18	12	M45.1	SQ
9120F654	2 1/2	60	45	0.7	7	7	7	7	7	4	40	CF8	BN	153	36	22	M50	SQ
9120F754	3	72	66	0.7	7	7	7	7	7	4	40	CF8	BN	153	36	22	M50	SQ

ELECTRICAL REFERENCE

Coil Type	Power Consumption & Watt Rating			Class of Insulation	Protection
	AC		DC		
	VA Inrush	VA Holding	Watts		
M 45.1 SQ	25	18	12	H	GP/WP IP-67
M 50 SQ	50	36	22	H	GP/WP IP-67
M 45.1 RD	25	18	12	H	GP/WP IP-67
M 50 RD	50	36	22	H	GP/WP IP-67
M 45.1 FLP IIC	25	18	12	H	IS/IEC 60079-1:2007, Group IIC.
M 50 FLP IIC	50	36	22	H	IS 12063-1987 IP-66 (IEC 60529:1989).

DIMENSIONS IN (MM)

Catalogue Number		Pipe Size Inch	Constr. Ref.	A	B	C	D	Weight (Approx.) Kgs. ⬢	Valve fitted with M45 / M50 RD GP coil - General purpose enclosure as per IP-20
Normally Closed	Normally Open								
9100F104	9120F104	3/8	83.1	65	29	109	54	1.072	
9100F154	9120F154	1/2	83.1	65	29	109	54	1.072	
9100F204	9120F204	3/4	83.1	80	36	113	66	1.502	
9100F254	9120F254	1	83.1	95	41	121	77	1.517	
9100F304	9120F304	1 1/4	83.1	100	45	123	90	1.967	
9100F354	9120F354	1 1/2	83.1	118	56.5	125	97	2.417	
9100F504	9120F504	2	153	137	70	145	117	3.637	
9100F654	9120F654	2 1/2	153	172	89	166	143	5.053	
9100F754	9120F754	3	153	195	94	176	156	6.433	

Catalogue Number		Pipe Size Inch	Constr. Ref.	E (RADIALLY)			F			G (APPROX.)		
Normally Closed	Normally Open			RD GP	RD WP	FLP	RD GP	RD WP	FLP	RD GP	RD WP	FLP
9100F104	9120F104	3/8	83.1	60	96	96	48	62	80	96	104	174
9100F154	9120F154	1/2	83.1	60	96	96	48	62	80	96	104	174
9100F204	9120F204	3/4	83.1	60	96	96	48	62	80	100	108	178
9100F254	9120F254	1	83.1	60	96	96	48	62	80	108	116	186
9100F304	9120F304	1 1/4	83.1	60	96	96	48	62	80	110	118	188
9100F354	9120F354	1 1/2	83.1	60	96	96	48	62	80	112	120	190
9100F504	9120F504	2	153	60	96	96	48	62	80	132	140	210
9100F654	9120F654	2 1/2	153	66	96	96	57	68	80	157	162	227
9100F754	9120F754	3	153	66	96	96	57	68	80	167	172	237

⬢ Weight with SQ enclosure only, ask AVCON for other weights.

Note:

Technical specifications, details & dimensions are subject to change without prior notice. Dimensions in the table are approximate subject to final confirmation by AVCON.