

'AVCON' Metal Forged Body (OD Based) Diaphragm Seated Valves With Manual Operation As Per ASME BPE

DATA SHEET
6227 FXXX

SPECIFICATIONS

AVCON Manual Operated Forged Body Valves, Type 6227F are available in following configurations.

- 1) BS6227FXX6 : Spigot Weldable end to ASME BPE
- 2) BS6227FXX7 : Tri-Clamp body to ASME BPE

CONSTRUCTION

- Valve Body : Stainless Steel SS316L (1.4404) As per A182 F 316L.
- Bonnet & Compressor. : ASTM A351 CF8(SS304).
- Spindle : AISI 304.
- Diaphragms : Standard EPDM-Temp. 120°C Others-PTFE backed by EPM-Temp. 145°C .
- Handwheel : Eng. Plastic PA6 GF 30%.
- Body Rated : 16 Bar.

FINISH

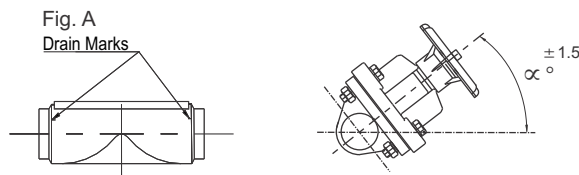
- Spigot & Tri-clamp Bodies : Internal 0.2 to 0.4 Ra, External 0.8 Ra. (Electropolished).
- Working Pressure. : Please refer to table below.

DESIGN FEATURE

Non rising spindle mechanism hermetically sealed flow path in the body and bonnet. Proper selections of diaphragms provides, precision control of critical or Ultrapure fluids. Fluids are completely isolated from the actuator and environment. Hygienic design, Bi-directional flow, body for low turbulence, also for steam sterilizing.

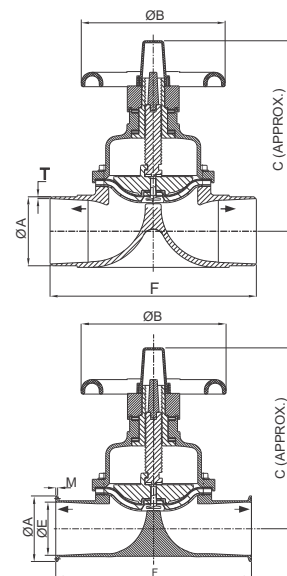


- Application : Pharmaceutical Industries, Biotechnology, Cosmetics, Food Industry, Process Control Technology, Ideally suitable for Liquids, Viscous liquids, Liquids contaminated with lubricants and grit particles. Highly Lustrous Finish and Aesthetical Appearance.
- Note : Installation as required, but preferably with actuator upright. Self-draining, with inclination of 20-31.5° against horizontal line as shown Fig.A.



SPECIFICATION TABLE

TYPE	Catalogue Number	ØA (mm)	ØE (mm)	T (mm)	F (mm)	B (mm)	C (mm)	M (mm)	α °	Approx. Kv M ³ /hr.	Max. Working Press.	
											at one end.	
											EPDM bar	PTFE bar
SPIGOT	BS6227F166	12.7	-	1.65	112	65	70.9	-	20°	3.5	10	6
	BS6227F216	19.05	-	1.65	117	65	89.3	-	21.5°	5	10	6
	BS6227F266	25.4	-	1.65	127	65	88.8	-	21.5°	12.5	10	6
	BS6227F416	38.1	-	1.65	146	128	129	-	25°	36	10	6
	BS6227F516	50.4	-	1.65	159	128	132.4	-	30°	42	10	6
TRICLAMP	BS6227F167	34	9.4	-	112	65	70.9	2.85	20°	3.5	10	6
	BS6227F217	50.5	15.75	-	117	65	89.3	2.85	21.5°	5	10	6
	BS6227F267	50.5	22.1	-	127	65	88.8	2.85	21.5°	12.5	10	6
	BS6227F417	50.5	34.8	-	146	128	129	2.85	25°	36	10	6
	BS6227F517	64.0	47.5	-	159	128	132.4	2.85	30°	42	10	6



Ed.:6227F-02-2015